

12-HETE ELISA kit

Catalog Number: **12H1/12H11/12H21/12H101**

Store at -20°C.

FOR RESEARCH USE ONLY



Introduction

This competitive ELISA kit is for determination of 12-HETE (12-Hydroxyeicosatetraenoic acid) levels in biological samples. The specificity of the 12-HETE ELISA was investigated using authentic 12-HETE and fatty acids which, based on their structure might be anticipated to compete with 12-HETE for binding to antibodies against 12-HETE. Anti-12-HETE only cross-reacted slightly with 15-HETE and 13-HODE.

HETEs are metabolites generated by the metabolism of arachidonic acid via lipoxygenase enzymes. 12(S)-HETE is a stereospecific hydroxyl product via reduction of 12(S)-hydroperoxy tetraenoic eicosatetraenoic acid [12(S)-HpETE], another 12-lipoxygenase metabolite of arachidonic acid. It has recently been reported that platelet 12(S)-HETE production is enhanced in the spontaneously hypertensive rat. 12(S)-HETE levels and 12-lipoxygenase (12-LO) protein are increased in patients with essential hypertension, suggesting a role for this metabolite in human hypertension. These metabolites exhibit a variety of biological activities such as mediation of angiotensin II-induced intracellular calcium transients in cultured rat vascular smooth muscle cells and as a second messenger in angiotensin-II induced aldosterone production. 12(S)-HETE also acts as an aggregator of polymorphonuclear leukocytes and is a highly selective ligand used to label mu opioid receptors and serves as a biomarker of Churg-Strauss syndrome.

Each kit can be used for triplicate analyses of up to 24 samples contains using a 96 well plate format, and contains a vial of 12-HETE standard, a vial of 12-HETE-conjugated horseradish peroxidase (HRP), and buffers for sample and HRP dilutions, and plate washing.

Storage and Stability

This kit will obtain optimal results if all of the components are stored at the proper temperature prior to use. Items should be stored at the designated temperatures upon receipt of this kit. All components are stored below -20°C and should not be re-frozen and thawed more than necessary.

Materials Provided

Part Number	Item	Description	Quantity
1	12-HETE ELISA Plate	Solid 96-well plate coated with anti 12-HETE antibody in each well	1
2	12-HETE Standard (2 µL)	Stock standard at a concentration of 1 mg/mL	1
3	12-HETE HRP Conjugates (12 µL)	1000 X concentrated solution	1
4	Sample Dilution Buffer (25 mL)	10 X solution of Tris-buffered saline with preservatives	1
5	HRP Buffer (15 mL)	1 X solution of Tris-buffered saline with preservatives	1
6	Wash Buffer Solution (25 mL)	10 X solution of Tris-buffered saline with detergents and preservatives	1

7

TMB Substrate
(22 mL)

A solution of TMB (tetra methyl benzadine)

1

Additional Required Materials (Not Provided)

- Plate reader with a 450 nm filter
- An 8-channel adjustable pipetter and an adjustable pipetter
- Storage bottles
- Costar® cluster tubes (1.2 mL) and microcentrifuge tubes
- Deionized water

Precautions

- Please read all instructions carefully before beginning the assay.
- The reagents in this kit have been tested and formulated to perform optimally. This kit may not perform correctly if any of the reagents are replaced or any of the procedures are modified.
- This kit is intended for research use only and is not to be used as a diagnostic.

Procedural Notes

- Remove all of the reagents required, including the TMB, and allow them to equilibrate to room temperature before proceeding with the assay.
- It is necessary to thoroughly mix the concentrated buffer solutions. A stir bar is contained within each buffer solution.

Sample Preparations

There are different protocols for isolating and purifying 12-HETE depending on the medium in which it is in. Listed below are the different protocols. For optimal results follow the appropriate protocol based on the biological sample present.

12-HETE measurement in cells

1. Collect and homogenize and/or sonicate the cells using a solution containing a final concentration of ~0.1 mM TPP (triphenylphosphine, 0.03-0.05 mg/mL). TPP is an antioxidant, which looks like a precipitate in samples because it does not easily dissolve. Before using the stored samples containing TPP, spin samples to separate the precipitated TPP from sample solution.
2. Acidify the whole homogenized cells with acetic acid to a pH of approximately 3-4. Measure using standard pH paper.
3. Extraction with ethyl acetate. Add an equal volume of ethyl acetate to the homogenized cells and vortex very well. Place the upper organic phase into a fresh clean tube after centrifugation. Then add another equal volume of ethyl acetate to the homogenized cells to start the second-time extraction. It is strongly recommended that extraction is performed three times.
4. Evaporate the pooled ethyl acetate from the extractions until all has dried up under argon or nitrogen gas.
5. **Saponification if needed (see below)**
6. Add 20 µL ethanol, or N, N-dimethyl-formamide (DMF), to dissolve the dried-up residue for reconstitution. Add 0.5 mL of 1x Sample Dilution Buffer (provided in kit) to make a solution. Load 100 µL in each well, in triplicates, on the ELISA plate. (Note: We recommend measuring a different dilution of sample in attempt to fit the results to the standard curve. e.g., load 3 wells with 50 µL of the rest of sample plus 50 µL of 1x Sample Dilution Buffer, and 3 wells with 10 µL of the rest of sample plus 90 µL of 1x Sample Dilution Buffer.)
7. Perform the ELISA for 12-HETE (according to the instructions of the manufacturer).

Saponification (to cleave fatty acid from glycerol backbone):

1. Dissolve dried fatty acids (obtained from 3X ethyl acetate extractions) in 2 mL of 20% KOH solution (make working solution: 1 mL of 2 M KOH + 4 mL methanol so that the final conc. of KOH = 0.4 N).
2. Vortex and incubate for 1 h at 50°C.
3. Add 1.5X H₂O to the solution and adjust pH with 20% formic acid to pH ~5.
4. Re-extract the solution with ethyl acetate (1 part aqueous solution + 1 part ethyl acetate) and dry.

12-HETE measurement in tissues

1. Homogenize 1 g of tissue, 4 mL of H₂O, and 0.01 mg TPP.
2. Acidify the homogenate by adding 8 µL of acetic acid to each homogenate.
3. Extract with an equal amount of ethyl acetate, vortex thoroughly, spin down, and collect the organic phase. Repeat this extraction twice more and combine all of the organic phases.
4. Dry the organic phase with argon or nitrogen gas.
5. **Saponification if needed (see 12-HETE measurement in cells)**
6. Dissolve the dried residue from above step # 4 with ethanol or DMF. (Add approximately 20 µL of ethanol or DMF to reconstitute the dried-up residue.)
7. Dilute further with 1x Sample Dilution Buffer: Add approximately 0.5 mL of 1x Sample Dilution Buffer and centrifuge at 10,000 rpm for five minutes at room temperature. The supernatant will be used for ELISA.
8. Perform the ELISA for 12-HETE (according to the instructions of the manufacturer).

12-HETE measurement in plasma or serum

1. Combine 1.8 mL of plasma (adjusted with approximately 20 µL of acetic acid to pH 4) and 1.8 mL of ethyl acetate. Vortex thoroughly. Centrifuge at 2000 rpm for ten minutes at 22°C. Three phases should result:
 - i. Upper organic phase – ethyl acetate phase (lipoproteins)
 - ii. Interphase – proteins
 - iii. Lower phase – aqueous phase
2. Collect the upper organic phase (a) and set aside.
3. Discard the interphase. Transfer the lower phase with a glass pipette to a new tube, and repeat the ethyl acetate extraction step 2 more times.
4. Evaporation of pooled organic phase: There should be approximately 5-6 mL of the ethyl acetate phase (a). Dry the pooled organic phase in a Speedvac to get the extracted sediment (b).
5. Saponification (to cleave fatty acid from glycerol backbone): Dissolve the dried-up residues (b) in 2 mL of 20% KOH solution (for preparation see 12-HETE in cells). Vortex thoroughly and incubate for 1 h at 50°C. This will yield an aqueous solution (c).
6. Dilute 2 mL of the aqueous solution (c) with 3 mL of H₂O. Adjust the pH using 20% formic acid (132 µL) to pH ~5.5. Add ethyl acetate (1 part aqueous solution (c) + 1 part ethyl acetate), vortex thoroughly, and centrifuge at 2000 rpm for ten minutes at 22°C. Repeat the procedure twice more using an equal volume of ethyl acetate per sample. Collect the upper phase with saponified lipids.
7. Dry the pooled ethyl acetate upper phase (d) in a Speedvac, yielding the dried sample-sediment (e). Store the sediment (e) at -20°C. For ELISA assay, dissolve the dried sample-residue (e) in 20 µL of ethanol, then add 130 µL of 1x Sample Dilution Buffer.
8. For the competitive 12-HETE ELISA, the above 150 µL sample needs to be further diluted: Dilute 1:4 (e.g., 80 µL sample + 320 µL 1x Sample Dilution Buffer). Check the final pH (should be pH 7.4). When calculating the concentration, consider the dilution factor. In this case, 150 µL total sample volume from 1.8 mL plasma (12-fold concentration) and then, 80 sample in 400 µL SDB (5-fold dilution). Since, the samples are concentrated 2.4-fold; to get the actual concentration, you must divide by 2.4.
9. Perform the ELISA for 12-HETE (according to the instructions of the manufacturer).

Assay Preparations

The solid 96-well plate and TMB solution are provided ready to use. The preparations of other assay reagents are detailed below.

Wash Buffer: Mix the solution with a stir bar, applying low heat until a clear colorless solution is obtained. Dilute the entire contents of the Wash Buffer Concentrate (25 mL) with 225 mL of deionized water to yield a final volume of 250 mL of 1 X Wash Buffer. This can then be refrigerated for the entire life of the kit.

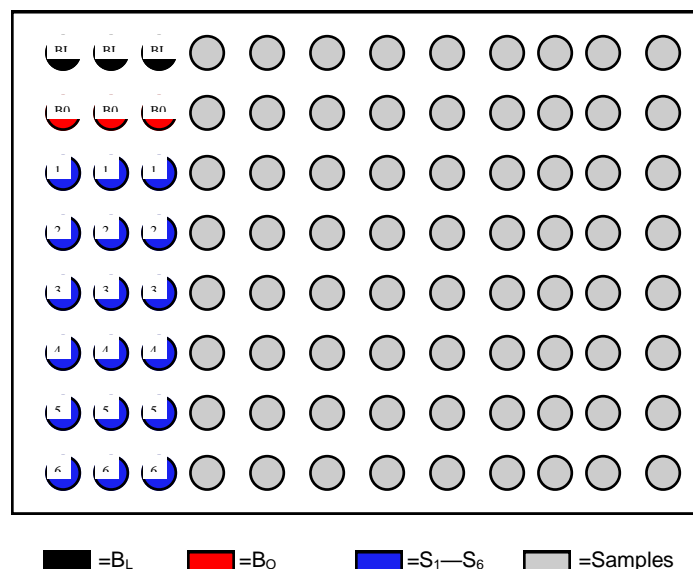
HRP Conjugate: Dilute 1 vial of the 12-HETE-HRP conjugate (0.012 mL) with 12.00 mL of 1 X HRP buffer. One vial makes enough conjugate for one plate. The conjugate must be used the same day and should not be stored for later use.

Standards: Label 5 microtubes as Standard 1 through Standard 5. Dilute the entire contents of Sample Dilution Stock buffer (25 mL) with 225 mL deionized water to yield a final volume of 250 mL of 1 X Sample Dilution Buffer. Add 0.9 mL of the Sample Dilution Buffer to the microtubes 1 to 5. Spin down the enclosed 12-HETE standard vial (2 μ L, filled with inert gas) and add 1.998 mL of Sample Dilution Buffer to obtain 2 mL of solution. Label this Standard 6. Add 0.1 mL of the Standard 6 to the microtube labeled Standard 5 and mix thoroughly. Next, add 0.1 mL of Standard 5 into the microtube labeled Standard 4 and mix thoroughly. Continue to serially dilute the standards using 1:10 dilutions for the remaining standards.

Samples: Samples can be directly diluted into the 1 X Sample Dilution Buffer if it is in solution. For extracted and dried samples, it is recommended to dissolve the dried-up samples with a minimal amount of ethanol or N, N-dimethyl-formamide (DMF, 10 μ L to 20 μ L) and vortex well. Before ELISA assay, add 100 μ L of 1 X Sample Dilution Buffer to make the stock sample solution ready for quantification with ELISA. The stock sample solution can be further diluted to a proper range of concentration for ELISA test.

Performing the Assay

Plate Setup: Each plate must contain a minimum of three blank wells (B_L), three maximum binding wells (B_O), and a six point standard curve (S_1 - S_6). Each sample should be assayed in triplicate. A suggested plate format is shown below:



Standard Dilutions Table

Standards	Final Concentration (pg/mL)	Add Sample Dilution Buffer (mL)	Serial Dilutions Procedure
No. 6	1,000,000	1.998	2 μ L of stock solution.
No. 5	100,000	0.9	Add 0.1 mL of No. 6
No. 4	10,000	0.9	Add 0.1 mL of No. 5
No. 3	1,000	0.9	Add 0.1 mL of No. 4
No. 2	100	0.9	Add 0.1 mL of No. 3
No. 1	10	0.9	Add 0.1 mL of No. 2

Assay Procedure

Step 1: Load 200 microliters of Sample Dilution Buffer into the blank (B_L) wells and 100 microliters of Sample Dilution Buffer into the maximum binding (B_O) wells.

Step 2: Load 100 microliters of each of the standards into the appropriate wells.

Step 3: Load 100 microliters of each of the samples into the appropriate wells.

Step 4: Load 100 microliters of the diluted 12-HETE-HRP conjugate in the B_O wells, the standard wells, and the sample wells. Do NOT add HRP conjugate into the B_L wells.

Step 5: Incubate the plate at room temperature for two hours.

Step 6: Wash the plate three times with 400 microliters of the diluted Wash Buffer per well.

Step 7: After the last of the three wash cycles pat the plate dry onto some paper toweling.

Step 8: Add 200 microliters of the TMB substrate to all of the wells (including B_L wells).

Step 9: Incubate the plate at room temperature for 15-30 minutes.

Step 10: Add 50 microliters of 2 N sulfuric acid to all of the wells.

Step 11: Read the plate at 450 nm.

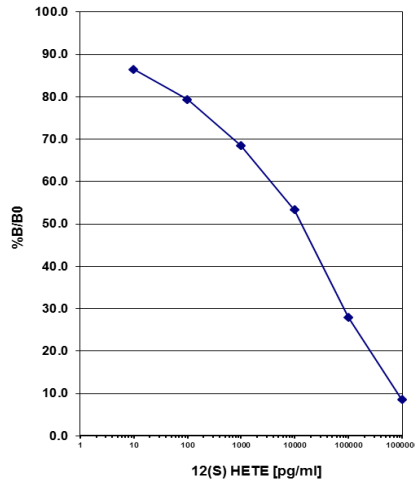
Calculating the Results

Most plate readers provide data reduction software that can be used to plot the standard curve and determine the sample concentrations. If your plate reader does not have this option, then a data reduction program can be used (4 parameter of log-log curve fit).

If you do not have these options, the results can be obtained manually as follows:

1. Average the absorbance readings from the blanks and subtract that value from each well of the plate to obtain the corrected readings. (Note: Some plate readers do this automatically. Consult the user manual of your plate reader.)
2. Average the corrected absorbance readings from the B_O wells. This is your maximum binding.
3. Calculate the %B/ B_O for Standard 1 by averaging the corrected absorbance of the two S_1 wells, divide the average by the maximum binding, then multiply by 100. Repeat this formula for the remaining standards.
4. Plot the %B/ B_O versus the concentration of 12-HETE from the standards using semi-log paper.
5. Calculate the %B/ B_O for the samples and determine the concentrations, utilizing the standard curve.
6. Multiply the concentrations obtained for each of the samples by their corresponding dilution factor.

Typical Results



The data shown here is an example of typical results obtained using the Detroit R & D 12-HETE ELISA kit. These results are only a guideline, and should not be used to determine values from your samples. The user must run their own standard curve every time.

B_L wells = 0.053
 B_O wells = 1.558

Standard	Concentration	O.D.	%B/B _O
No. 1	10 pg/mL	1.347	86.5
No. 2	100 pg/mL	1.235	79.3
No. 3	1,000 pg/mL	1.067	68.4
No. 4	10,000 pg/mL	0.830	53.2
No. 5	100,000 pg/mL	0.436	28.0
No. 6	1,000,000 pg/mL	0.131	8.4

Specificity of anti-12-HETE

Anti-12-HETE showed almost no cross-reactivity with structurally similar 12-HETE and 13-HODE

Eicosanoids	% Binding of control
12-HETE	100.00
15-HETE	3.8
13-HODE	2.6

Troubleshooting

No color present in standard wells.

- The HRP conjugate was not added. Redo the assay and add the conjugate at the proper step.
- The HRP conjugate was not incubated for the proper time. Redo the assay and incubate for the proper time.

No color in any wells, including the TA wells.

- The TMB substrate was not added. Add substrate.
- The TMB substrate was not incubated for the proper time. Continue incubation until desired color is reached.

The color is faint.

- One or all of the incubation times were cut short. Redo the assay with the proper incubation times.
- The TMB substrate was not warmed up to room temperature. Redo the assay making sure all reagents are at room temperature.
- The lab is too cold. Be sure the lab temperature is between 21-27°C and redo the assay.

The background color is very high.

- The TMB substrate has been contaminated. Redo the assay with a fresh bottle of substrate.

Scattered O.D. obtained from the sample.

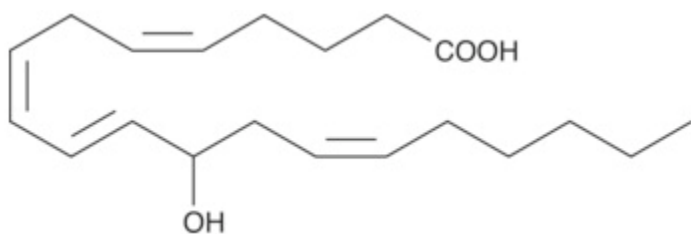
- Redo assay using an 8-channel pipetman making sure that 8 channels are equal volume while loading.

References

1. Stern N, Kisch ES, Knoll E. Platelet lipoxigenase in spontaneously hypertensive rats. *Hypertension*. 1996;27:1149–1152.
2. González-Núñez, Daniel, Joan Claria, Francisca Rivera, Esteban Poch. Increased levels of 12(S)-HETE in patients with essential hypertension. *Hypertension* 2001; 37: 334-338
3. Natarajan, Rama, Noe Gonzales, Linda Lanting, Jerry Nadler. Role of the Lipoxigenase pathway in angiotensin II-induced vascular smooth muscle cell hypertrophy. *Hypertension* 1994; 23: 1142
4. J L Nadler, R Natarajan and N Stern. Specific action of the lipoxigenase pathway in mediating angiotensin II-induced aldosterone synthesis in isolated adrenal glomerulosa cells. *J Clin Invest*. 1987;80(6):1763–1769.
5. O'Flaherty JT, Thomas MJ, Lees CJ, McCall CE. Neutrophil-aggregating activity of monohydroxyeicosatetraenoic acids. *Am J Pathol*. 1981 Jul;104(1):55-62.
6. Christie, M.J., C.W. Vaughan and S.L. Ingram. Opioids, NSAIDs, and 5-lipoxygenase inhibitors act synergistically in brain via arachidonic acid metabolism. *Inflamm. Res*. 1999, 48: 1-4.
7. Szczeklik W, Sanak M, Mastalerz L, Sokołowska BM, Gielicz A, Soja J, Kumik J, Musiał J, Szczeklik A. 12-hydroxy-eicosatetraenoic acid (12-HETE): a biomarker of Churg-Strauss syndrome. *Clin Exp Allergy*. 2012 Apr;42(4):513-22

Warranty

Detroit R&D, Inc., makes no warranty of any kind expressed, or implied, including, but not limited to the warranties of fitness for a particular purpose and merchantability.



Detroit R&D, Inc.

Metro Center For High Technology Bldg. (MCHT)
2727 Second Ave. Suite 4113
Detroit, MI 48201

Phone: 313.961.1606
Fax: 313.963.7130
E-mail: info@detroitrandd.com
www.DetroitRandD.com