



Hypertension/Stroke ELISA (20-HETE) Kit with Immunoaffinity Columns

Cat # 20H1-IA: ELISA kit for measuring 20-HETE in biological samples: \$497

This is the same ELISA kit as our Cat# 20H1 kit only we have added 10 immunoaffinity columns for one-step purification of 20-HETE. Each immunoaffinity column can bind up to 1 microgram of 20-HETE. No extraction with organic solvents is necessary.

This competitive ELISA kit is for determination of 20-HETE (also known as 20-OH-AA) levels in biological samples. The specificity of the 20-HETE ELISA was investigated using authentic 20-HETE and a panel of fatty acids which, based on their structure, might be anticipated to compete with 20-HETE for binding to antibodies for 20-HETE. Anti-20-HETE did not cross-react with 14,15- and 11,12-DHETs or PGE₂ and showed almost no cross-reactivity even with structurally extremely similar arachidonic acid (AA), linoleic acid and linolenic acid (see plot below).

Buy in Quantity and Save! 2-4 kits \$472 each; 5-9 kits \$447 each; 10 or more kits \$422 each

Related Products

Hypertension/Stroke ELISA kits:

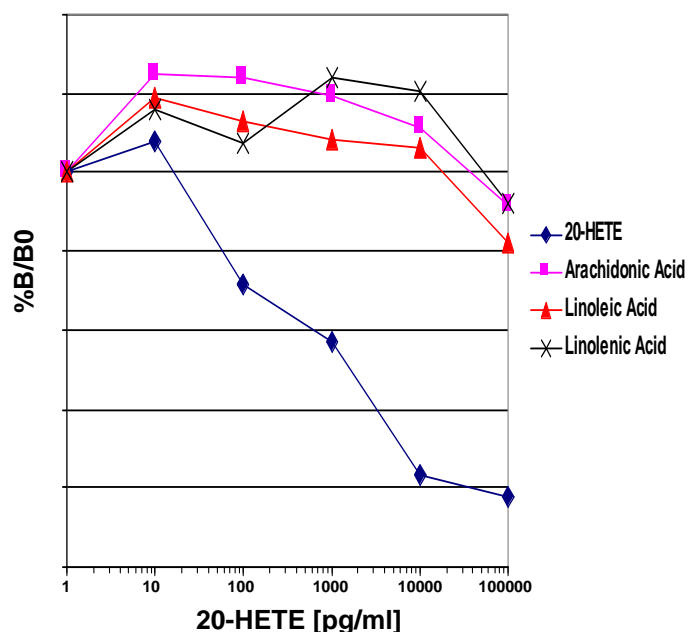
- 20-HETE B-glucuronide ELISA
- 14,15-DHET Hypertension/Stroke ELISA
- 11,12-DHET Hypertension/Stroke ELISA
- 12(S)-HETE Hypertension/Stroke ELISA
- 15(S)-HETE Hypertension/Stroke ELISA

Oxidative Stress ELISA Kit:

- 8-isoprostane ELISA

Hypertension/Stroke Antibodies:

- Rat: CYP2C23, CYP2C11, CYP2C, CYP4A, sEH
- Human: CYP1B1, CYP2C8/9, sEH, CYP4A



Specificity of anti-20-HETE ELISA

Eicosanoids	% Binding of control
20-HETE	100.00
Arachidonic Acid	<0.02
Linoleic Acid	<0.02
Linolenic Acid	<0.02
15-HETE	<0.02
14,15-DHET	<0.02
11,12-DHET	<0.02
PGE ₂	<0.02