

Rabbit Anti-GAPDH

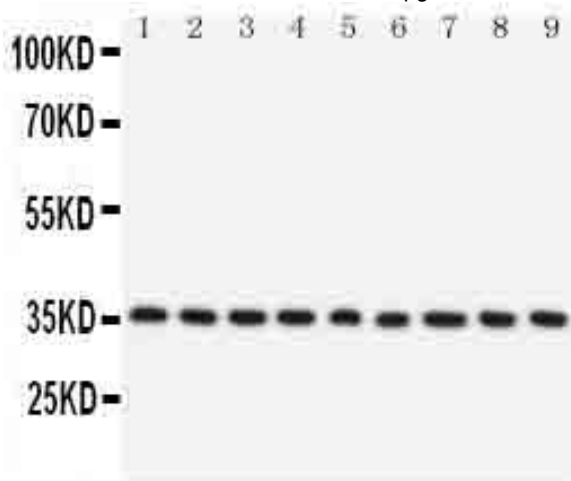
(100 µg/vial, Lyophilized)

Catalog Number: BPAB1450

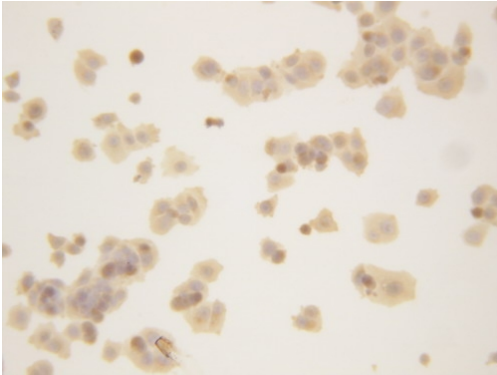
FOR RESEARCH USE ONLY

Detroit R&D, Inc.

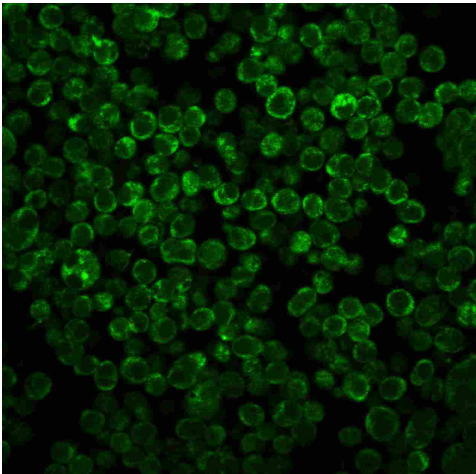
Product Name	Anti-GAPDH Antibody
Reactive Species	Human, Mouse, Rat
Description	Rabbit IgG polyclonal antibody for Glyceraldehyde-3-phosphate dehydrogenase(GAPDH) detection. Tested with WB, IHC-P, IHC-F, ICC in Human;Mouse;Rat.
Application	IHC, ICC, WB
Formulation	Each vial contains 5mg BSA, 0.9mg NaCl, 0.2mg Na ₂ HPO ₄ , 0.05mg Thimerosal, 0.05mg NaN ₃ .
Uniprot ID	P04406
Cross Reactivity	No cross reactivity with other proteins
Form	Lyophilized
Concentration	Add 0.2ml of distilled water will yield a concentration of 500µg/ml.
Suggested Dilutions	Immunocytochemistry , 0.5-1µg/ml, Human, Mouse, Rat Immunohistochemistry(Frozen Section), 0.5-1µg/ml, Mouse, Rat, Human Immunohistochemistry(Paraffin-embedded Section), 0.5-1µg/ml, Human, Mouse, Rat, By Heat Western blot, 0.1-0.5µg/ml, Human, Mouse, Rat



Anti-GAPDH antibody Western blotting
Lane 1: Rat Cardiac Muscle Tissue Lysate
Lane 2: Rat Brain Tissue Lysate
Lane 3: Rat Liver Tissue Lysate
Lane 4: Rat Skeletal Muscle Tissue Lysate
Lane 5: MM453 Cell Lysate
Lane 6: MM231 Cell Lysate
Lane 7: SMMC Cell Lysate
Lane 8: HELA Cell Lysate
Lane 9: HT1080 Cell Lysate



Anti-GAPDH antibody
ICC: MCF-7 Cell



Anti-GAPDH antibody
ICC: SMMC Cell