

Anti-P Glycoprotein/ABCB1 Antibody

(100 µg/vial, Lyophilized)

Catalog Number: BPAB2780

FOR RESEARCH USE ONLY

Detroit R&D, Inc.

Product Name	Anti-P Glycoprotein/ABCB1 Antibody
Reactive Species	Human, Mouse, Rat
Description	Rabbit IgG polyclonal antibody for P Glycoprotein detection. Tested with WB in Human;Mouse;Rat.
Application	WB
Clonality	Polyclonal
Formulation	Each vial contains 4mg Trehalose, 0.9mg NaCl, 0.2mg Na ₂ HPO ₄ , 0.05mg NaN ₃ .
Storage Instructions	At -20°C for one year. After reconstitution, at 4°C for one month. It can also be aliquotted and stored frozen at -20°C for a longer time. Avoid repeated freezing and thawing.
Host	Rabbit
Uniprot ID	P08183

Technical Details

Immunogen	A synthetic peptide corresponding to a sequence of human P Glycoprotein.
Cross Reactivity	No cross reactivity with other proteins.
Form	Lyophilized
Concentration	0.5-1mg/ml, actual concentration vary by lot. Use suggested dilution ratio to decide dilution procedure.
Suggested Dilutions	Western blot, 0.1-0.5µg/ml

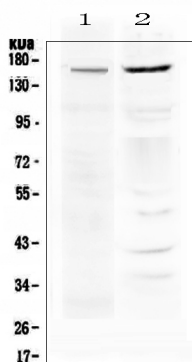


Figure 1. Western blot analysis of P Glycoprotein using anti-P Glycoprotein antibody. The sample well of each lane was loaded with 50ug of sample under reducing conditions.

Lane 1: human THP-1 whole cell lysates,
Lane 2: human A375 whole cell lysates.

Blocked the membrane with 5% Non-fat Milk/ TBS for 1.5 hour at RT. The membrane was incubated with rabbit anti-P Glycoprotein antigen affinity purified polyclonal antibody at 0.5 µg/mL overnight at 4°C, then washed with TBS-0.1%Tween 3 times with 5 minutes each and probed with a goat anti-rabbit IgG-HRP secondary antibody at a dilution of 1:10000 for 1.5 hour at RT. The signal is developed using an Enhanced Chemiluminescent detection (ECL) kit. A specific band was detected for P Glycoprotein at approximately 160KD. The expected band size for P Glycoprotein is at 141KD.