

Anti-PARP Rabbit Monoclonal Antibody

(100 µg/vial, Lyophilized)

Catalog Number: BRM1122

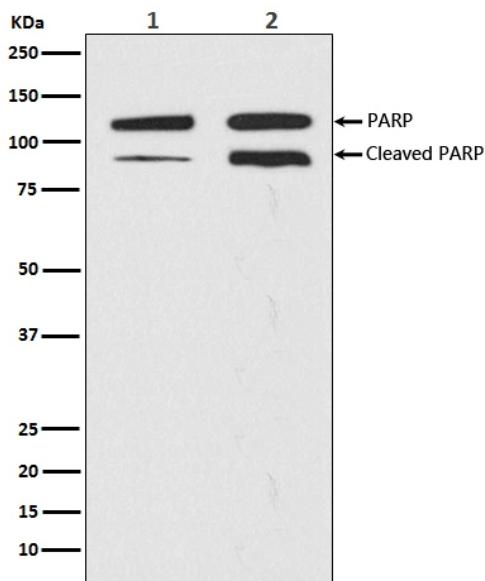
FOR RESEARCH USE ONLY

Detroit R&D, Inc.

Product Name	Anti-PARP Rabbit Monoclonal Antibody
Reactive Species	Human, Mouse, <u>Rat</u>
Description	Anti-PARP Rabbit Monoclonal Antibody tested for IF, IHC, ICC, WB in Human, Mouse, Rat
Application	IF, WB
Formulation	Rabbit IgG in phosphate buffered saline , pH 7.4, 150mM NaCl, 0.02% sodium azide and 50% glycerol.
Storage Instructions	At -20°C for one year. Avoid repeated freezing and thawing.
Host	Rabbit
Uniprot ID	P09874

Technical Details

Immunogen	A synthesized peptide derived from human PARP
Form	Liquid
Concentration	0.5-1mg/ml, Use suggested dilution ratio to decide dilution procedure.
Purification	Affinity-chromatography
Suggested Dilutions	WB 1:500-1:1000 IHC 1:100-1:500 ICC/IF 1:50-1:200



Western blot analysis of PARP expression in (1) HeLa cell lysate; (2) HeLa cell lysate treated with staurosporine.

The sample well of each lane was loaded with 50ug of sample under reducing conditions. Blocked the membrane with 5% Non-fat Milk/ TBS for 1.5 hour at RT. The membrane was incubated with rabbit anti-PARP1 monoclonal antibody overnight at 4°C, then washed with TBS-0.1%Tween 3 times with 5 minutes each and probed with a goat anti-rabbit IgG-HRP secondary antibody at a dilution of 1:10000 for 1.5 hour at RT. The signal is developed using an Enhanced Chemiluminescent detection (ECL) kit. A specific band was detected for PARP1