

Anti-Phospho-p38 MAPK(Thr180,Tyr182)

(100 µl/vial)

Catalog Number: BPhos1001

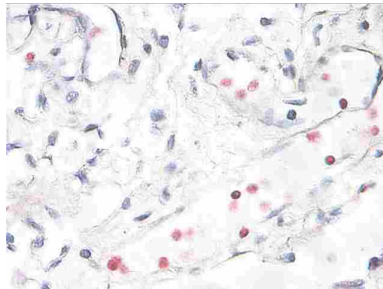
FOR RESEARCH USE ONLY



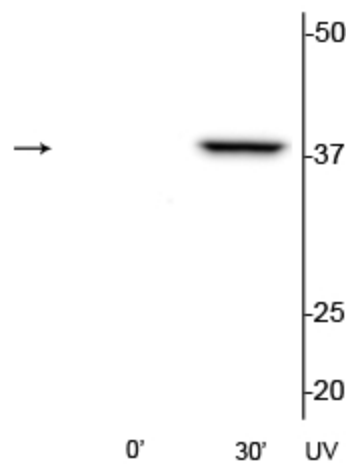
Overview

| | |
|-----------------------------------|---|
| Product Name | Anti-Phospho-p38 MAPK (Thr180,Tyr182) Antibody |
| Reactive Species | Human |
| Description | Phospho-specific Rabbit Anti-p38 MAPK (Thr ¹⁸⁰ ,Tyr ¹⁸²) Antibody validated for WB, IHC in human. |
| Application | IHC, WB |
| Clonality | Polyclonal |
| Formulation | 100 µl in 10 mM HEPES (pH 7.5), 150 mM NaCl, 100 µg per ml BSA and 50% glycerol. |
| Storage Instructions | At -20°C for one year. After reconstitution, at 4°C for one month. It can also be aliquotted and stored frozen at -20°C for a longer time. Avoid repeated freezing and thawing. |
| Host | Rabbit |
| Uniprot ID | Q16539 |
| Immunogen | The antigen is a phosphopeptide corresponding to amino acid residues surrounding the phospho-Thr180 and phospho-Tyr182 of rat p38 MAPK. |
| Predicted Reactive Species | Bovine, Canine, Chicken, Mouse, Rat, Zebrafish |
| Form | Liquid |
| Concentration | 0.5-1mg/ml, actual concentration varies by lot. Use suggested dilution ratio to decide dilution procedure. |
| Suggested Dilutions | WB, 1:1000 IHC, 1:250 |

Anti-Phospho-p38 MAPK (Thr180,Tyr182) Antibody Images



Immunostaining of human breast cancer tissue showing p38 when phosphorylated at Thr¹⁸⁰/Tyr¹⁸².



Western blot of HeLa cell lysates that had been treated with UV (~254nm) for 0' or 30' showing the specific immunolabeling of the ~39 kDa p38 MAPK protein phosphorylated at Thr¹⁸⁰/Tyr¹⁸².