

## Polyclonal HSP90A Antibody

(1 mg/mL, 50  $\mu$ L)

Catalog Number: **DRD93622**

Store at -20°C.

FOR RESEARCH USE ONLY



**Alternative Names:** HSP90AA1; HSP90A; HSPC1; HSPCA; Cytosolic Heat shock protein 90; Heat shock protein HSP 90-alpha; Heat shock 86 kDa; HSP 86; HSP86; Renal carcinoma antigen NY-REN-38

**Preparation:** Polyclonal antibody for HSP90A was produced by immunization of a rabbit with a synthesized peptide derived from the C-terminal region of human HSP90A.

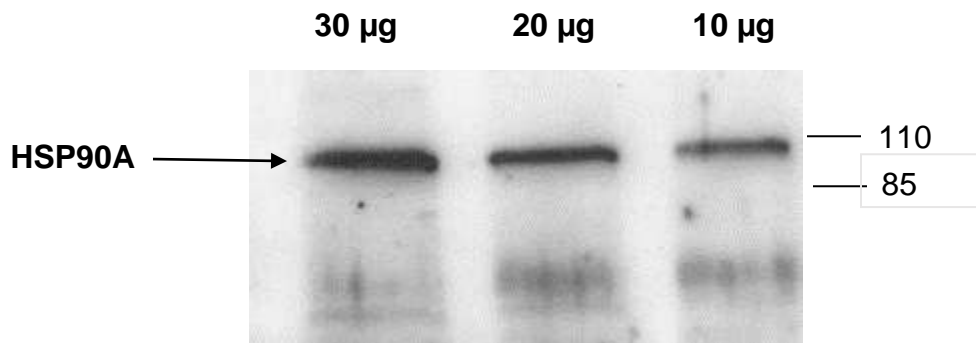
**Specificity:** The antibody recognizes HSP90A from rat, human, and mouse.

**Form:** liquid; PBS, pH 7.4, with 50% glycerol and 0.02% azide.

**Storage:** Avoid repeated freezing and thawing by dividing the contents into aliquots and storing at -20°C.

**Western Blot:** Incubate antibody in TBS for a 1:2000 dilution containing 5% non-fat milk for a minimum of two hours. We recommend a 1:5000 dilution of conjugated anti-mouse secondary antibody in TBS containing 5% non-fat milk for 1 hr incubation.

**IHC:** We recommend diluting the antibody 1:100-1:300 with an overnight incubation.



**Whole homogenate from NRK cells (normal rat kidney cells)**