

Polyclonal POLG Antibody

(1 mg/mL, 100 μ L)

Catalog Number: **DRD110749**

Store at -20°C.

FOR RESEARCH USE ONLY



Alternative Names: DNA polymerase (pol) gamma, Mitochondrial DNA polymerase, POLG1; POLGA.

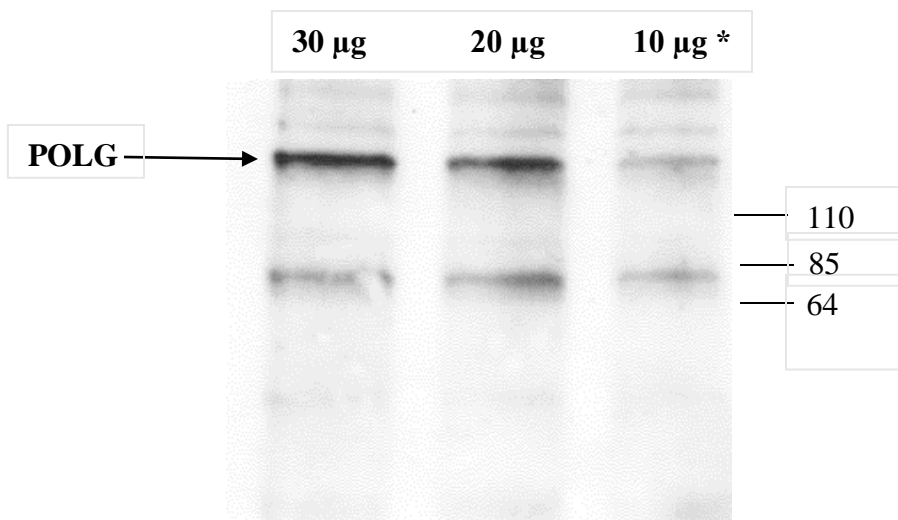
Preparation: Polyclonal antibody for POLG was produced by immunization of a rabbit with a recombinant protein of human POLG.

Specificity: The antibody recognizes POLG from human.

Form: liquid; PBS, pH 7.4, with 50% glycerol and 0.02% azide.

Storage: Avoid repeated freezing and thawing by dividing the contents into aliquots and storing at -20°C.

Western Blot: Incubate antibody in TBS for a 1:2000 dilution containing 5% non-fat milk for a minimum of two hours. We recommend a 1:5000 dilution of conjugated anti-mouse secondary antibody in TBS containing 5% non-fat milk for 1 hr incubation.



* Rat NRK (normal rat kidney) cells whole homogenate