

## Rabbit Anti-CYP11B1 (Human)

(100 µg/vial, Lyophilized)

**Catalog Number: BPAB987**

FOR RESEARCH USE ONLY

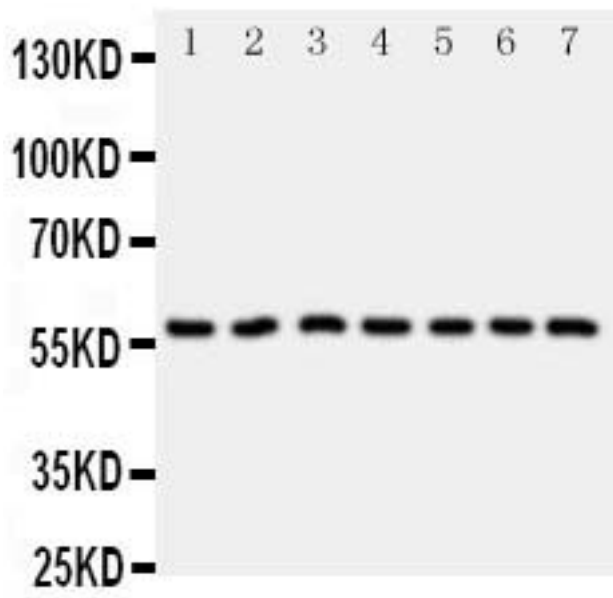


### About CYP11B1

CYP11B1 (Cytochrome p450, family 11, subfamily B, polypeptide 1), also called Steroid 11-beta-hydroxylase or P450C11, is a steroid hydroxylase found in the zona fasciculata. The CYP11B1 gene functions primarily in mitochondria in the zona fasciculata of the adrenal cortex to convert 11-deoxycortisol to cortisol and 11-deoxycorticosterone to corticosterone. CYP11B1 is a member of the cytochrome P450 superfamily of enzymes. It is mapped on 8q24.3. The CYP11B1 gene contains 9 exons and spans 6.5 kb. Using RT-PCR, Kayes-Wandover and White detected CYP11B1 mRNA in human cardiac tissue samples from left and right atria, aorta, apex, intraventricular septum, and atrioventricular node, as well as whole adult and fetal heart. Ventricles did not express CYP11B1. In patients with 11-beta-hydroxylase deficiency leading to hypertension and congenital adrenal hyperplasia, Pascoe et al. identified mutations in the CYP11B1 gene.

<b>Product Name</b>	Anti-CYP11B1 Antibody
<b>Reactive Species</b>	Human
<b>Description</b>	Rabbit IgG polyclonal antibody for Cytochrome P450 11B1, mitochondrial (CYP11B1) detection. Tested with WB in Human.
<b>Application</b>	WB
<b>Clonality</b>	Polyclonal
<b>Formulation</b>	Each vial contains 5mg BSA, 0.9mg NaCl, 0.2mg Na <sub>2</sub> HPO <sub>4</sub> , 0.05mg Thimerosal, 0.05mg NaN <sub>3</sub> .
<b>Storage Instructions</b>	At -20°C for one year. After reconstitution, at 4°C for one month. It can also be aliquotted and stored frozen at -20°C for a longer time. Avoid repeated freezing and thawing.
<b>Host</b>	Rabbit
<b>Uniprot ID</b>	P15538
<b>Immunogen</b>	A synthetic peptide corresponding to a sequence at the C-terminus of human CYP11B1.
<b>Cross Reactivity</b>	No cross reactivity with other proteins
<b>Form</b>	Lyophilized
<b>Reconstitution</b>	Add 0.2ml of distilled water will yield a concentration of 500ug/ml.
<b>Purification</b>	Immunogen affinity purified.
<b>Suggested Dilutions</b>	Western blot, 0.1-0.5µg/ml, Human

### Anti-CYP11B1 Antibody Images



Anti-CYP11B1 antibody, Western blotting  
All lanes: Anti CYP11B1 at 0.5ug/ml  
Lane 1: HELA Whole Cell Lysate at 40ug  
Lane 2: U87 Whole Cell Lysate at 40ug  
Lane 3: MM231 Whole Cell Lysate at 40ug  
Lane 4: PANC Whole Cell Lysate at 40ug  
Lane 5: MM453 Whole Cell Lysate at 40ug  
Lane 6: HELA Whole Cell Lysate at 40ug  
Lane 7: SMMC Whole Cell Lysate at 40ug  
Predicted bind size: 58KD  
Observed bind size: 58KD