

Rabbit Anti-MCSF/CSF1

(100 µg/vial, Lyophilized)

Catalog Number: BPAB2365

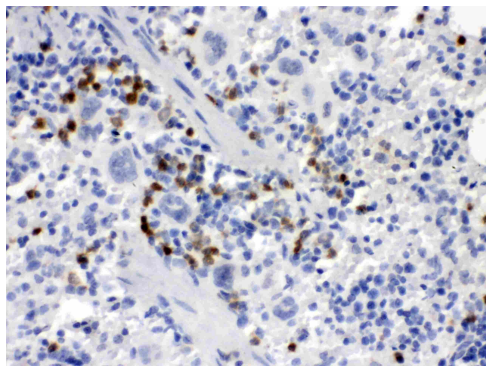
FOR RESEARCH USE ONLY

Detroit R&D, Inc.

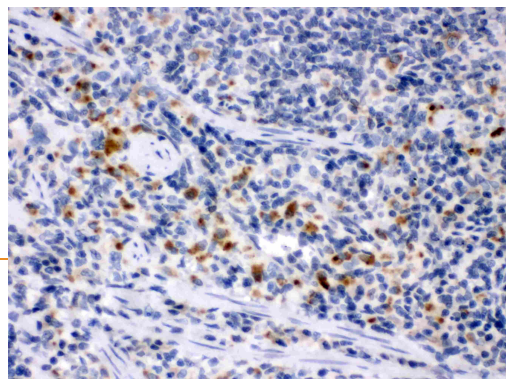
| | |
|-----------------------------|---|
| Product Name | Anti-MCSF/CSF1 Picoband™ Antibody |
| Reactive Species | Mouse, Rat |
| Description | Rabbit IgG polyclonal antibody for Macrophage colony-stimulating factor 1(CSF1) detection. Tested with IHC-P, ELISA in Mouse;Rat. |
| Application | ELISA, IHC |
| Clonality | Polyclonal |
| Formulation | Each vial contains 5mg BSA, 0.9mg NaCl, 0.2mg Na2HPO4, 0.05mg NaN3. |
| Storage Instructions | At -20°C for one year. After reconstitution, at 4°C for one month. It can also be aliquotted and stored frozen at -20°C for a longer time. Avoid repeated freezing and thawing. |
| Host | Rabbit |
| Uniprot ID | P07141 |

Technical Details

| | |
|----------------------------|---|
| Immunogen | E. coli-derived mouse MCSF recombinant protein. Mouse MCSF shares 80.9 % and 88.6% amino acid (aa) sequence identity with human and rat MCSF, respectively. |
| Cross Reactivity | No cross reactivity with other proteins |
| Form | Lyophilized |
| Reconstitution | Add 0.2ml of distilled water will yield a concentration of 500ug/ml. |
| Purification | Immunogen affinity purified. |
| Suggested Dilutions | ELISA , 0.1-0.5µg/ml, Mouse, - Immunohistochemistry(Paraffin-embedded Section), 0.5-1µg/ml, Mouse, Rat |



Anti- MCSF antibody, IHC(P)
IHC(P): Mouse Spleen Tissue



Anti- MCSF antibody, IHC(P)
IHC(P): Rat Spleen Tissue