

Rabbit Anti-SFTPA1/2

(100 µg/vial, Lyophilized)

Catalog Number: BPAB3249

FOR RESEARCH USE ONLY



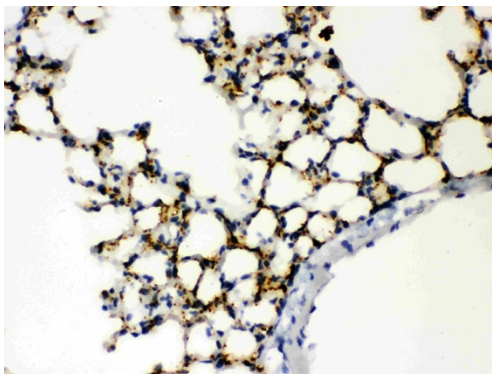
Product Name	Anti-SFTPA1/2 Antibody
Reactive Species	Human, Mouse, Rat
Description	Rabbit IgG polyclonal antibody for Pulmonary surfactant-associated protein A1/Pulmonary surfactant-associated protein A2(SFTPA1/2) detection. Tested with WB, IHC-P, IHC-F in Human;Mouse;Rat.
Application	IHC, WB
Clonality	Polyclonal
Formulation	Each vial contains 5mg BSA, 0.9mg NaCl, 0.2mg Na ₂ HPO ₄ , 0.05mg Na ₃ .
Storage Instructions	At -20°C for one year. After reconstitution, at 4°C for one month. It can also be aliquotted and stored frozen at -20°C for a longer time.Avoid repeated freezing and thawing.
Host	Rabbit
Uniprot ID	Q8IWL1

Technical Details

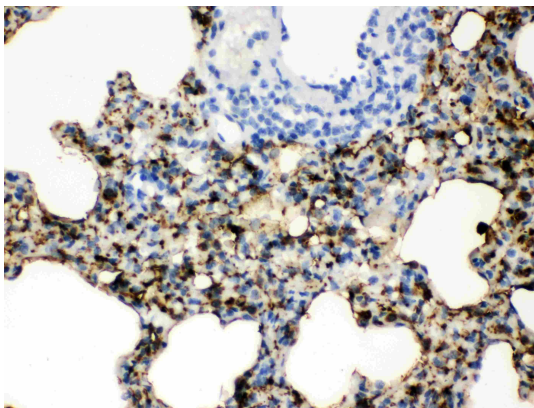
Immunogen	A synthetic peptide corresponding to a sequence at the C-terminus of human SFTPA1/2.
Cross Reactivity	No cross reactivity with other proteins.
Form	Lyophilized
Reconstitution	Add 0.2ml of distilled water will yield a concentration of 500ug/ml.
Purification	Immunogen affinity purified.
Suggested Dilutions	Immunohistochemistry(Frozen Section), 0.5-1µg/ml, Mouse, Rat, - Immunohistochemistry(Paraffin-embedded Section), 0.5-1µg/ml, Human, Mouse, Rat, By Heat Western blot, 0.1-0.5µg/ml, Human, Mouse, Rat



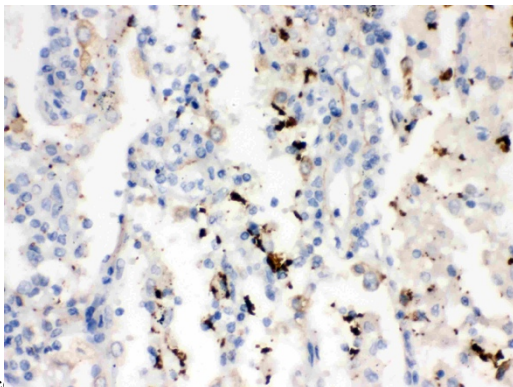
Anti- SFTP A1/2 antibody Western blotting
 All lanes: Anti SFTP at 0.5ug/ml
 Lane 1: Rat Lung Tissue Lysate at 50ug
 Lane 2: Mouse Lung Tissue Lysate at 50ug
 Lane 3: A549 Whole Cell Lysate at 40ug
 Predicted bind size: 26KD
 Observed bind size: 26KD



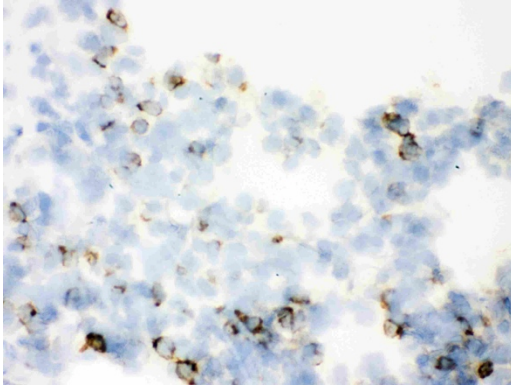
Anti-SFTP A1/2 antibody IHC(P)
 IHC(P): Mouse Lung Tissue



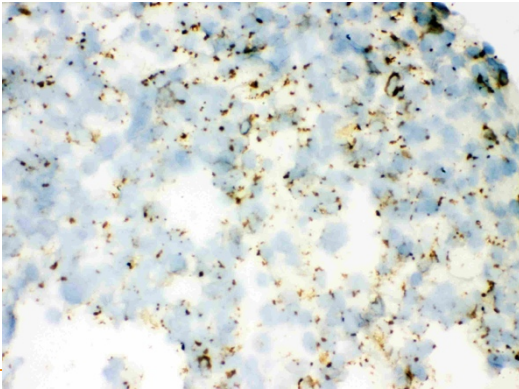
Anti- SFTP A1/2 IHC(P)
 IHC(P): Rat Lung Tissue



Anti- SFTP A1/2 IHC(P)
 IHC(P): Human Lung Cancer Tissue



Anti- SFTP A1/2 IHC(F)
IHC(F): Rat Lung Tissue



Anti- SFTP A1/2 IHC(F)
IHC(F): Mouse Lung Tissue