

## Rabbit Anti-TAU-2

(100 µg/vial, Lyophilized)

**Catalog Number: BPAB3504**

FOR RESEARCH USE ONLY

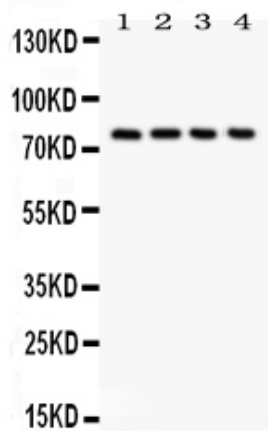
**Detroit R&D, Inc.**

### Overview

<b>Product Name</b>	Anti-Tau/MAPT Antibody
<b>Reactive Species</b>	Human, Mouse, Rat
<b>Description</b>	Rabbit IgG polyclonal antibody for Microtubule-associated protein tau(MAPT) detection. Tested with WB in Human;Mouse;Rat.
<b>Application</b>	WB
<b>Clonality</b>	Polyclonal
<b>Formulation</b>	Each vial contains 5mg BSA, 0.9mg NaCl, 0.2mg Na2HPO4, 0.05mg Thimerosal, 0.05mg NaN3.
<b>Storage Instructions</b>	At -20°C for one year. After reconstitution, at 4°C for one month. It can also be aliquotted and stored frozen at -20°C for a longer time.Avoid repeated freezing and thawing.
<b>Host</b>	Rabbit
<b>Uniprot ID</b>	P10636

### Technical Details

<b>Immunogen</b>	A synthetic peptide corresponding to a sequence at the N-terminus of human Tau, different from the related mouse and rat sequences by three amino acids.
<b>Cross Reactivity</b>	No cross reactivity with other proteins
<b>Form</b>	Lyophilized
<b>Reconstitution</b>	Add 0.2ml of distilled water will yield a concentration of 500ug/ml.
<b>Purification</b>	Immunogen affinity purified.
<b>Suggested Dilutions</b>	Western blot, 0.1-0.5µg/ml, Human, Mouse, Rat



Anti-Tau antibody, Western blotting  
All lanes: Anti at 0.5ug/ml  
Lane 1: Rat Brain Tissue Lysate at 50ug  
Lane 2: Mouse Brain Tissue Lysate at 50ug  
Lane 3: HT1080 Whole Cell Lysate at 40ug  
Lane 4: MCF-7 Whole Cell Lysate at 40ug  
Predicted bind size: 79KD  
Observed bind size: 79KD