

**Polyclonal Rabbit anti-P450 2E1
(CYP2E1) Antibody**

(50 μ L)

Catalog Number: **P2E1PT**

Store at -20°C.

FOR RESEARCH USE ONLY



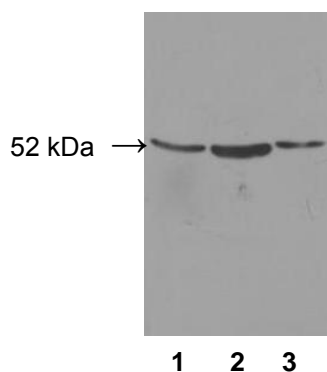
Preparation: Antiserum for CYP2E1 was produced by immunization of a rabbit with CYP2E1 peptide antigen.

Specificity: The antibody recognizes CYP2E1 from rat, rabbit, and human.

Contents: 50 μ L per vial with 0.7% BSA and 0.05% azide.

Storage: Avoid repeated freezing and thawing by aliquoting portions of the antibody into eppendorf tubes and storing at -20°C.

Western Blots: 5 μ L per 10 mL of TBS (1:2000 dilution) containing 5% non-fat milk for overnight incubation is necessary for ECL method. We recommend a 1:5000 dilution of HRP conjugated anti-rabbit secondary antibody in TBS containing 5% non-fat milk for 1 hr incubation.



- 1: Male Sprague-Dawley rat microsomes (10 μ g/lane): control (treated with PBS).
- 2: Male Sprague-Dawley rat microsomes (10 μ g/lane): treated with pyridine (100 mg/kg/day for 3 days, ip).
- 3: Pooled Human Liver Microsomes, 25 donors (10 μ g/lane)