

**Polyclonal Rabbit anti-P450 1A2
(CYP1A2) Antibody**

(50 μ L)

Catalog Number: **PH1A2**

Store at -20°C.

FOR RESEARCH USE ONLY



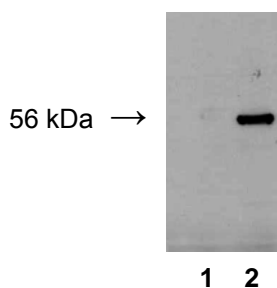
Preparation: Antibody for CYP1A2 was produced by immunization of a rabbit with human CYP1A2 peptide antigen.

Specificity: The antibody recognizes CYP1A2 from human.

Contents: 50 μ L per vial with 0.7% BSA and 0.05% azide.

Storage: Avoid repeated freezing and thawing by aliquoting portions of the antibody into eppendorf tubes and storing at -20°C.

Western Blots: 5 μ L per 10 mL of TBS (1:2000 dilution) containing 5% non-fat milk for overnight incubation is necessary for ECL method. We recommend a 1:5000 dilution of HRP conjugated anti-rabbit secondary antibody in TBS containing 5% non-fat milk for 1 hr incubation.



1: Human lymphoblast expressed with CYP1A1 (10 μ g/lane)
2: Human lymphoblast expressed with CYP1A2 (10 μ g/lane)